

WOULDN'T  
OVER THIS  
TO WORK



ONE COMPANY, OVER 300 MACHINES.



YOU WO  
CLIMB OV  
TO GET T



# INTRODUCING THE 325T<sup>eco</sup> FORESTMAS<sup>TM</sup>



The ForestMaster Defense Package from JCB turns your JCB Compact Tracked Loader into an impenetrable fortress. Already the world's safest tracked loader, the JCB 325T ForestMaster, protects both operator and machine from the hazards of the forestry industry. Key features include:

**1** The single arm **PowerBoom** structure provides a safe route for hydraulic hoses so that they are well protected from damage. A single JCB PowerBoom boasts up to 20% more steel than our rivals' twin-arm designs. The **tilting cab design** allows one person to access the machine's power train and hydraulic components for maintenance and servicing.

**2** The ForestMaster features a **JCB ecoMAX engine**, offered in 74hp, with minimal emissions and fuel consumption. No after treatment requirements are particularly important in Forestry applications. Heat created on other machines, in combination with high amounts of chaff creates a fire hazard, giving the ecoMAX a distinct advantage.

**3** **Forestry cutting head** design utilizes a high output variable displacement piston motor with self aligning belt drive providing maximum productivity.

**4** Equipped with a **recovery winch** with a capacity of 15,000 lbs., the winch allows operators to resume work with zero downtime.

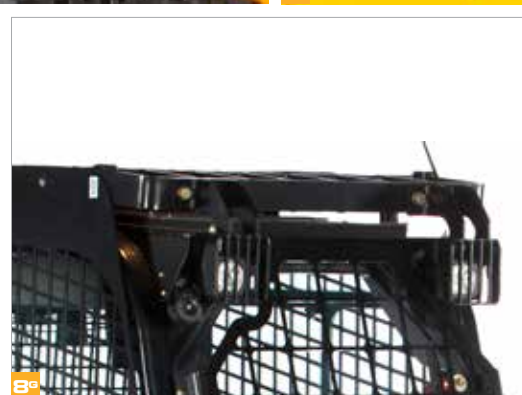
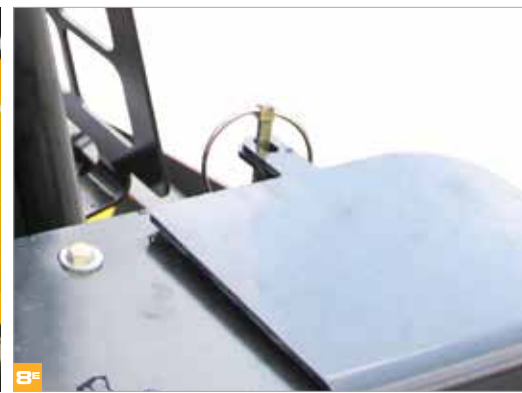
**5** The **cab environment** is 33% larger than ordinary skid steer cabs. Includes a comfortable, standard mechanical suspension seat, pressurized and isolation mounted enclosed cab design.

**6** Overall performance is improved by the efficient **cooling system** which includes: Cooling Pack Guard, Reversing Fan and Standard-Fit Air Intake Scavenge System.

**7** Level 2 **Falling Object Protection Structure (FOPS)** shields the operator from danger above while left and right hand steel mesh provide peripheral protection.

**8** **Protection Kit** includes:

- <sup>A</sup>Exhaust Cover
- <sup>B</sup>Left Hand Quarter Panel Guard
- <sup>C</sup>High Flow Steel Tube Guard
- <sup>D</sup>Loader Hydraulic Hose Guard
- <sup>E</sup>Auxiliary Coupler Guard
- <sup>F</sup>Track Tube Guard
- <sup>G</sup>Front Work Light Protection



## 325T FORESTMAS<sup>TM</sup> SPECIFICATIONS

### Engine

|                        |                             |
|------------------------|-----------------------------|
| Model                  | EcoMAX TCAE-55              |
| Emission Certification | EPA-T4F (EU S33B)           |
| Gross Peak Power       | 74hp at 2,400 RPM           |
| Displacement           | 268 cu. in.                 |
| Air Cleaner            | Centrifugal dry type engine |

### Undercarriage

|                 |              |
|-----------------|--------------|
| Track Width     | 17.7 (450mm) |
| Tractive Effort | 41432N       |

### Fuel Capacity

|           |          |
|-----------|----------|
| Fuel Tank | 27.2 gal |
|-----------|----------|

### Mulching head

|                |          |
|----------------|----------|
| Overall Width  | 73 in.   |
| Overall Height | 57.6 in. |
| Overall Length | 46.3 in. |

|                           |        |
|---------------------------|--------|
| Cutting Width             | 60 in. |
| Number of Cutting Hammers | 45     |

|                        |           |
|------------------------|-----------|
| Max Operating Pressure | 4,000 psi |
| Weight                 | 2057 lb.  |

### Weight/Dimension

|                |             |
|----------------|-------------|
| Overall Length | 13'6"       |
| Weight         | 12,515 lbs. |