



## Fx475 Qtv

Excavators in the 39-61 ton class are the perfect match for this demolition machine. Whether you're breaking blue granite in the Northeast or reducing oversize in quarries, the Fx475 Qtv hammer improves day-to-day performance, offering less maintenance and downtime, smoother operation, superior strength and the highest level of reliability.

The Fx475 Qtv offers improved durability, with features that include a square, mono-block body design for superior strength. The elimination of thru-bolts also reduces maintenance and failure. A patent pending dust prevention system incorporates grooves to trap contaminants on the upstroke and expel them on the piston down stroke, while a cushion ring acts as a secondary trap. This improves the life of the piston, bushings and working steel.

Operators appreciate performance features that include a new valve design to reduce hydraulic fluid temperatures. A redesigned piston enhances surface contact to working steel, while a larger bushing surface keeps it aligned for greater impact. A replaceable cylinder liner increases tool life and reduces time-consuming maintenance. The unique one-piece enclosure and dampening system reduces noise levels for use in noise sensitive environments. A higher back head pressure and larger piston diameter increases impact performance by 20% over previous models.

All Furukawa hammers come complete with Furukawa's exclusive Pro-Pak for ease of installation. The Pro-Pak includes hose whips, mounting hardware, standard working steel and tool kit with operating manual at no additional charge.



## FxSERIES

- NO** torquing of Thru-Bolts.
- NO** broken Thru-Bolts.
- NO** downtime due to Thru-Bolts.

Why? **NO THRU-BOLTS.**

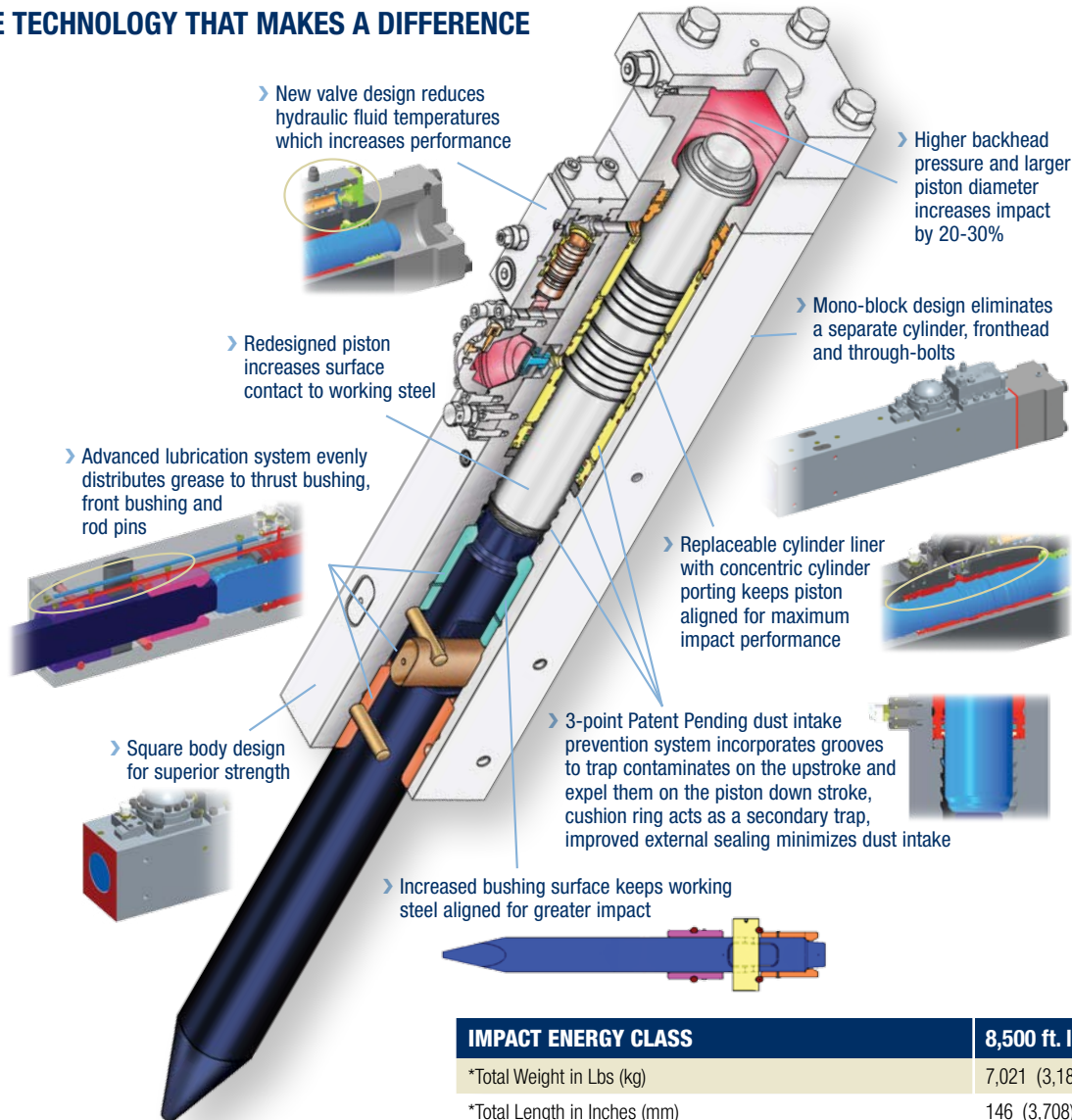
## Fx475 Qtv

### Features and Benefits:

- Increased hydraulic flow range for use on a wider range of carriers
- Mono-block design eliminates a separate cylinder, fronthead and thru-bolts
- Improved Dust Intake Prevention system increases reliability
- Replaceable cylinder liner with concentric porting keeps piston aligned for maximum impact performance
- Improved valve design reduces hydraulic fluid temperatures which increases performance
- Square body design for superior strength
- 3-point sealing system prevents internal contamination
- Redesigned piston increases surface contact to working steel
- Improved dampening system keeps breaker properly secure in cradle to reduce wear
- Qtv cradle for improved protection, sound suppression and dampening
- Increased and improved lubrication to critical components
- Longer thrust bushing for increased internal alignment also insures direct impact with piston

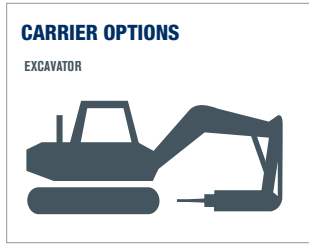


INNOVATIVE TECHNOLOGY THAT MAKES A DIFFERENCE



IMPACT ENERGY CLASS	8,500 ft. lbs.
*Total Weight in Lbs (kg)	7,021 (3,185)
*Total Length in Inches (mm)	146 (3,708)
Working Steel	
Diameter in Inches (mm)	6.69 (170)
New Length of Steel Measured from Front Face in Inches (mm)	32.68 (830)
Replaceable Steel Length, Measured from Front Face in Inches (mm)	20.08 (510)
General Specifications	
Adjustable Blows Per Minute (BPM)	250 ~ 350
Acceptable GPM Range (LPM)	53 ~ 79 (200 ~ 299)
Acceptable PSI Range (Bar)	2,320 ~ 2,610 (160 ~ 180)
85 dB(A) @	~ 22 meters
Recommended Carrier Range in U.S. Tons (tonnes)	39 ~ 61 (35 ~ 55)
Carrier Options	■

**\*Note:** Total weight and total length include standard working steel and universal top cap less mounting pins and bushings.



**CORPORATE HEADQUARTERS**  
711 Lake Street Kent, OH 44240  
Ph: 330-673-5826  
Fax: 330-677-1616  
Toll Free: 1-800-527-2282

**SOUTHEAST SALES AND SERVICE FACILITY**  
155 Dexter Road  
Spartanburg, SC 29303  
Ph: 864-541-0125

www.frdusa.com